

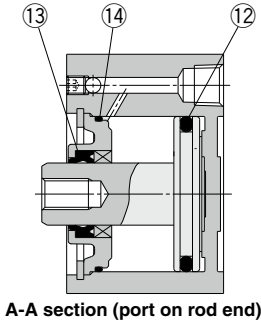
CQP2 Series

ø12, ø16, ø20, ø25
ø32, ø40, ø50, ø63
ø80, ø100

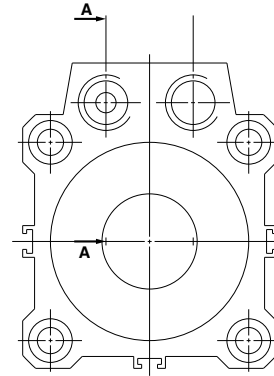


Construction

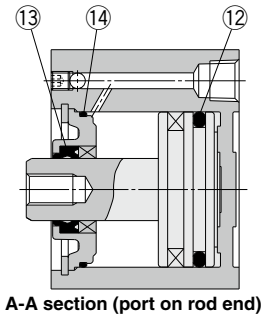
Without auto switch magnet



A-A section (port on rod end)



With auto switch magnet



A-A section (port on rod end)

* The numbers correspond with those in the "Construction" of the CQ2 series in the **Web Catalog**.

Seal Kit List

No.	Description	Material	Note
⑫	Piston seal	NBR	
⑬	Rod seal		
⑭	Gasket		

Replacement Parts: Seal Kit

Bore size (mm)	Part no.	Contents
Pneumatic type (non-lube)		
12	CQ2B12-PS	Set of nos. ⑫, ⑬, ⑭
16	CQ2B16-PS	
20	CQ2B20-PS	
25	CQ2B25-PS	
32	CQ2B32-PS	
40	CQ2B40-PS	
50	CQ2B50-PS	
63	CQ2B63-PS	
80	CQ2B80-PS	
100	CQ2B100-PS	
Air-hydro type		
20	CQ2BH20-PS	Set of nos. ⑫, ⑬, ⑭
25	CQ2BH25-PS	
32	CQ2BH32-PS	
40	CQ2BH40-PS	
50	CQ2BH50-PS	
63	CQ2BH63-PS	
80	CQ2BH80-PS	
100	CQ2BH100-PS	

* The seal kit includes ⑫, ⑬, ⑭. Order the seal kit based on each bore size.
* Since the seal kit does not include a grease pack, it should be ordered separately.

Grease pack part no.: GR-S-010 (10 g)

Actuators

Rotary Actuators
Air Grippers

Modular F.R.L.
Pressure Control Equipment

Air Preparation
Equipment

Industrial Filters

Replacement
Procedure

Actuators

Rotary Actuators
Air Grippers

Modular F.R.L.
Pressure Control Equipment

Air Preparation Equipment
Industrial Filters

Compact Cylinder/Axial Piping: Single Acting, Single Rod

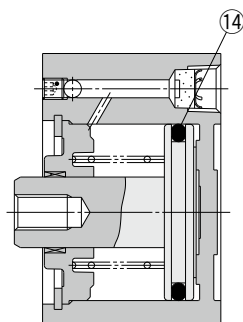
CQP2 Series

∅12, ∅16, ∅20, ∅25
∅32, ∅40, ∅50



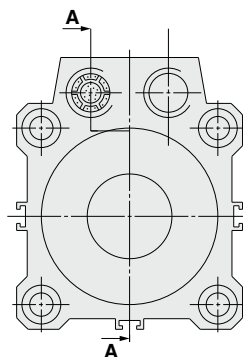
Construction

Spring return

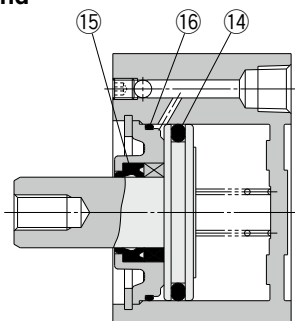


A-A section

For the single acting type, the supply/exhaust port is on the spring side.



Spring extend



**A-A section
(Port on rod end)**

* The numbers correspond with those in the "Construction" of the CQ2 series in the **Web Catalog**.

Seal Kit List

No.	Description	Material	Note
14	Piston seal	NBR	
15	Rod seal		
16	Gasket		

Replacement Parts: Seal Kit

Bore size (mm)	Part no.	Contents
Single acting, spring return		
12	CQ2B12-S-PS	No. 14
16	CQ2B16-S-PS	
20	CQ2B20-S-PS	
25	CQ2B25-S-PS	
32	CQ2B32-S-PS	
40	CQ2B40-S-PS	
50	CQ2B50-S-PS	

* Since the seal kit does not include a grease pack, it should be ordered separately.

Grease pack part no.: GR-S-010 (10 g)

Replacement Parts: Seal Kit

Bore size (mm)	Part no.	Contents
Single acting, spring extend		
12	CQ2B12-T-PS	Set of nos. 14, 15, 16
16	CQ2B16-T-PS	
20	CQ2B20-T-PS	
25	CQ2B25-T-PS	
32	CQ2B32-T-PS	
40	CQ2B40-T-PS	
50	CQ2B50-T-PS	

* The seal kit includes 14, 15, 16. Order the seal kit based on each bore size.

* Since the seal kit does not include a grease pack, it should be ordered separately.

Grease pack part no.: GR-S-010 (10 g)